

# SWINDON TOWN



OFFICIAL CLUB SPONSOR



**BARCLAYS**

DIVISION TWO

**PLYMOUTH ARGYLE**

TUESDAY JANUARY 1st 1991

KICK-OFF 3.00 p.m.

OFFICIAL PROGRAMME £1.00

TODAY'S  
MATCH SPONSOR:

**John Coyle  
Services**





**97.2**

## **FIRST FOR SPORT IN WILTSHIRE**

**We offer the most comprehensive sports  
coverage in the county.**

**Tune to 97.2 or 102.2 MHz for updates at:**

**06.45      07.45      08.45      13.10      17.15**

**Plus our weekend coverage starting on Friday  
at 17.15 with the exclusive Swindon Town  
coverage featuring Ossie Ardiles, players and  
management from the County Ground.**

**Saturday sport is a full four hours starting at  
14.00 with detailed match coverage and  
radio's first classified football results at 16.55.**



1990 . . .

Good afternoon ladies and gentlemen, welcome to our first match in 1991.

A warm welcome to all the Supporters, Directors and Team of Plymouth Argyle.

As we enter 1991 it may well be time to turn our thoughts to what has been a disappointing first half of the season.

We set out in August confident that we would be able to continue where we left off in May, by playing attacking football which had rightfully won us a place in the First Division. After a good win at Charlton followed by defeating Ipswich here at the County Ground, we met defeat at the hands of our neighbours Bristol City.

Having been at Swindon only eighteen months, I am very much aware what that result meant to you the Swindon supporters. After drawing at Hull and losing to Middlesbrough, we then lost Colin Calderwood in our victory over Wolverhampton. Colin's injury was a major blow to us as he had a great influence over our defensive capabilities.

This was followed by a good win at Oxford where after being two goals down, we fought back with some of our best football of the season to win by four goals to two.

A terrible performance at Darlington where Dave Bennett broke his leg, left us needing to score four times to progress further in the Rumbelows Cup. A home draw with Millwall was not too inspiring. We played well at Oldham, but were beaten and fought back for a draw at Brighton after being two goals down.

The second leg match with Darlington showed how we could play, and after a tremendous effort we progressed to play Sheffield Wednesday in the next round.

Our next two home matches against Bristol Rovers and West Ham were lost to sucker punches. Although we lost both matches I thought a draw in each case would have been fairer.

An away draw at Leicester and a sorry display at Barnsley was followed by a magnificent defensive display at Hillsborough in the Rumbelows Cup. A 0-0 draw meant a replay on 6th November. The least said the better about our home match with Port Vale which we lost 3-1.

An improvement saw us loose the replay with Sheffield Wednesday the following week by one goal to nil. A hard earned draw against a very physical Notts County team was followed by another home draw with Blackburn Rovers. Sandwiched in between all this was probably our best performance for some time when we beat Portsmouth 3-0 with Nestor Lorenzo not only making his debut, but also scoring. A draw at Ipswich was followed by a narrow defeat at First Division Chelsea.

In my opinion our performance against Chelsea was our best football for a long time.

Losing key players for two or three matches does not help to maintain any sort of form. This together with a number of serious injuries notably Colin Calderwood and Dave Bennett has meant an abnormal amount of chopping and changing of the team.

However, 1990 is now behind us, let's look forward to some exciting times ahead in 1991.

I would like to wish you all a Happy and Prosperous New Year.

OSSIE'S KIT IS SPONSORED BY:  
Swindon Supporters in London  
Contact: Nick Coote 021-828 1437  
Paul Donkersley 081-870 0316  
David Moulard 081-347 9845



*[Handwritten signature]*

WELCOME TO THE  
COUNTY GROUND  
-HOME OF



SWINDON TOWN  
FOOTBALL CLUB

County Ground, Swindon, Wiltshire  
SN1 2ED

Telephone:

(0793) 430430 (Main Office and  
Commercial Department)

(0793) 611499 (Travel Club)

(0793) 535130 (Rendezvous Club)

Fax: (0793) 536170

President: C. J. Green

Chairman: G. W. Herbert

Vice Chairman: C. M. Howard

Directors: L. Smart, N. H. Arkell,  
K. J. Chapman

Chief Executive: P. Day

Manager: O. C. Ardiles

Non Executive Directors:

D. Alderton, R. M. Mattick JP,

M. Z. Tryczynski

Commercial Manager: D. Buswell

Assistant Manager: P. D. Bates

Coach: A. A. Rowland

Youth Team Manager: J. Trollope

Physiotherapist: K. Morris

Hon. Medical Officer:

Dr. J. D. Nicholas

Chaplain: Rev. N. Sands

Official Club Sponsor: GWR FM

Today's Match Sponsor is:  
**JOHN COYLE SERVICES**

The Directors of Swindon Town Football Club would like to express their gratitude to **John Coyle Services** for their generosity in sponsoring today's match.

This is the official programme of Swindon Town Football Club. Individuals contributions do not necessarily represent the views of the club.

Edited by club staff with the valued assistance of **Paul Plowman**.

Printed by **Thamesdown Litho**

Front cover: **Ross MacLaren** meets two year old **Laurie Hamilton** in a recent visit to **Princess Margaret Hospital**.



Welcome to the players, officials  
and supporters of

# PLYMOUTH ARGYLE



PLYMOUTH ARGYLE - TEAM PHOTOGRAPH SEASON 1990/91

**Back row left to right:** Owen Pickard, Mark Fiore, Mark Damerell, Adrian Burrows, Adam King, Steve Morgan, Danis Salman, Kenny Brown.  
**Middle Row left to right:** Alan Gillett, Andy Morrison, Andy Thomas, Nicky Marker, Dave Walter, Rhys Wilmot, Robbie Turner, Paul Robinson, Kevin Summerfield, Malcolm Musgrove.  
**Front row left to right:** Paul Rowe, Kevin Hodges, Martin Barlow, Darren Garner, David Kemp, Paul Adcock, Paul Smith, Jason Rowbotham, David Byrne.

## PLYMOUTH ARGYLE - Form Guide

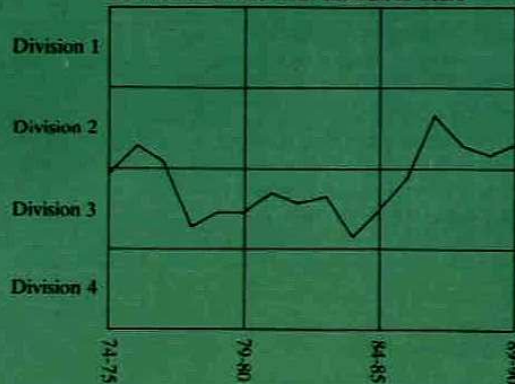
Last ten games

		H	A	Goalscorers	Att.
Oct 27	Hull City	W4-1		Morrison, Salman 2, Turner	5,039
31	Not'ham F. RLC	L1-2		Salman	17,467
Nov 3	Charlton A.		W1-0	Turner	5,239
10	Brighton & H.A.		L2-3	Turner, Barlow	7,305
17	Millwall	W3-2		Robinson 2 Marker (pen.)	6,542
20	Brighton	ZC D0-0†			2,596
24	West Ham Utd.	L0-1			11,490
Dec 1	Port Vale		L1-5	Ampadu	6,717
8	Watford		L0-2		6,361
16	Newcastle Utd	L0-1			7,845

† After extra-time - lost on penalties.

**Summary of goalscorers:** Thomas 8, Turner 4, Salman 3, Robinson 2, Fiore 2, Burrows 1, Morrison 1, Hodges 1, Barlow 1, Pickard 1, Marker 1, Ampadu 1.

## PLYMOUTH ARGYLE: The Last 15 Years



FM 97.2

AND SWINDON TOWN



# The squad

**Rhys Wilmot (Goalkeeper).** Born: Newport. Rhys was signed by Ken Brown for £100 in July 1989 from Arsenal. He had loan spells with Orient, Swansea City and ourselves prior to joining us. Welsh Under-21 and Schoolboy International and understudy to Neville Southall with the senior squad last season.

**David Walter (Goalkeeper).** Born: Torrington. Signed from Exeter City for a five figure fee in July 1990 after a successful loan spell with us at the end of last season. The North Devon farmer is keen to succeed in League football and will doubtless keep Rhys Wilmot on his toes.

**Adrian Burrows (Defender).** Born: Sutton-in-Ashfield. Adrian was signed on a two month loan period from Northampton Town in July 1984, at the end of which Plymouth paid £10,000 for his transfer. He is now a well established first team player being ever-present last season.

**Andy Morrison (Defender).** Born: Inverness. This big strong tackling defender joined Plymouth as a Y.T.S. trainee and immediately took the eye. He signed as a professional in July 1988 and last season made 18 League appearances.

**Kenny Brown (Defender).** Born: Upton. Signed from Norwich City, he is the son of former manager Ken Brown. Kenny has settled down well and has established a regular first team place, making 44 first team League appearances last season.

**Jason Rowbotham (Defender).** Born: Cardiff. Cardiff born Jason has played his way through the trainee ranks and signed a professional contract in July 1987. He is a quick tackling defender and always gives 100%.

**Steve Morgan (Defender).** Born: Oldham. Signed from Blackpool in July after refusing terms there when his contract expired. Steve's transfer fee was decided by tribunal. Played for England Under-19 side under new England manager Graham Taylor. Much is expected of manager David Kemp's biggest signing.

**Paul Smith (Defender).** Born: South Brent. Young Paul completed his Y.T.S. training and was promptly signed as a professional in July. A strong tackling play anywhere enthusiast. Paul made 14 reserve team appearances last season.

**Danis Salman (Defender).** Born: Cyprus. Danny signed for Plymouth just before the transfer deadline in March 1990 for a £40,000 fee. His vast experience with both Millwall and Brentford played a vital part in Plymouth's battle to maintain Second Division status last season.

**Julian Broddie (Defender).** Born: Rotherham. Signed from Barnsley by Ken Brown for £80,000 in January 1990. Julian was troubled with injuries and made only 19 appearances last season.

**Kevin Hodges (Midfield).** Born: Bridport. Kevin joined the club as an apprentice in July 1976 and became a full-timer in March 1978. He was deservedly voted 'Player of the Year' by Argyle supporters in the promotion season when he was ever-present, finishing as the leading goal scorer with 16 goals.

**Kevin Summerfield (Midfield).** Born: Walsall. Kevin was manager Dave Smith's first signing for the club on the 20th December 1984, joining Argyle on a free transfer from Cardiff City. Kevin started his career with West Bromwich Albion and also played for two other Midland sides - Birmingham City and Walsall.

**Andy Thomas (Midfield).** Born: Oxford. Signed from Bradford City in July 1989, and in his first season with the club he scored 15 League and Cup goals and he made 33 League appearances.

**Nicky Marker (Midfield).** Born: Exeter. Team Captain Nicky was signed from Exeter City for £75,000 in November 1987 as a defender, but has played most of his games with Argyle in a midfield role producing many fine performances.

**Adam King (Midfield).** Born: Hillingdon. Adam was signed from West Ham United in March 1990. A strong young midfield player who looks to have a promising career in front of him.

**Darren Garner (Midfield).** Darren is a local lad who came through the Y.T.S. ranks and signed as a full-time professional in March 1989. He looks a good bet for the future.

**Martin Barlow (Winger).** Born: Plymouth. Martin was originally signed as a Y.T.S. trainee player and looks to have a promising future. Was unlucky with injuries last season.

**David Byrne (Winger).** Born: Hammersmith. Signed from Millwall in March 1989, just before the deadline. David made 28 League appearances last season scoring 1 goal.

**Mark Fiore (Winger).** Born: Southwark, London. Mark was signed from Wimbledon in March 1990 for £50,000 and whilst his main position is on the left wing he can fill most roles on the left flank. Mark made 11 first team appearances last season.

**Mark Damerell (Winger).** Born: Plymouth. Signed by Ken Brown on a 2 year contract after impressing in trials. Mark made 20 reserve team appearances scoring 6 goals last season.

**Owen Pickard (Striker).** Born: Barnstaple. Owen signed as a trainee in July 1986 and his prolific goalscoring earned him a full-time contract. With the departure of first team strikers McCarthy and Tynan, Owen could well stake a claim for a first team place this season.

**Paul Robinson (Striker).** Born: Nottingham. Paul was signed from Scarborough in May this year. A big strong lad who Argyle hope will fill one of the striking roles vacated by Tommy Tynan and Sean McCarthy.

**Robbie Turner (Striker).** Born: Durham. Signed from Bristol City for £150,000, much is expected of this burly striker and he could become a firm favourite with the Home Park fans.

**Paul Adcock (Striker).** Born: Yeovil. Light weight and small for a striker but very sharp and his pace upset quite a number of defences in reserve team football last season. Completed his Y.T.S. service at the end of the season and is now on a 1 year professional contract.



## PAUL PLOWMAN continues his season by season look back at Swindon Town through the years.

### 1972/73

In June 1972, Dave Mackay decided to trade in one goalkeeper for another. Republic of Ireland striker Ray Treacy was signed from Charlton Athletic for £35,000, while Arthur Horsfield – who had been the Town's previous record signing at just half that fee – moved in the opposite direction.

Treacy's scoring was patchy, but he had claimed fourteen goals by the end of the season. Another summer acquisition was former Tottenham apprentice Ronnie Howell, who had since faded from the League scene and arrived at Swindon from Kettering Town.

But it was the club's next venture into the transfer market that was to cause a wave of discontent to sweep the County Ground. Facing falling gates – the average was three thousand down on the 1971/72 figures – and hefty mortgage repayments on the new North Stand, the Board decided that a sale had to be made.

The Town's most valuable asset, winger Don Rogers, made his

400th Football League appearance against Brighton on October 28 1972, after which he signed for Crystal Palace. Bert Head, the man who had brought him to Swindon nearly twelve years earlier, agreed to pay £147,000 for his services. An immediate replacement was secured in Tom Jenkins of Southampton, at an outlay of £50,000.

Just two days after the sale of the fans' idol, Mr Mackay resigned from his post as manager. Within a week, he was installed in a similar capacity at Nottingham Forest, leaving his assistant Des Anderson in charge for an away trip to Luton. The Town won that game, their first away victory of the season, but Anderson was soon on his way to join his former boss and the reins were handed to scout Les Allen, the former Chelsea, Tottenham and Queens Park Rangers centre-forward. His previous managerial experience had encompassed Greek side Hercules and Woodford Town, who had finished



**Swindon Town  
1972-73**

● Back Row: J. Trullhope, P. Doremchough, R. Smart.  
● Middle Row: R. Potter, T. Hubbard, R. Thomas, F. Burrows, D. Anderson (Coach).  
● Front Row: D. Rogers, S. Fellows, R. Bunkell, D. Mackay (Team Manager), R. Treacy, J. Butler.



**Swindon Town  
Football Club**



Official Programme

**Sunderland**

1972-73 Season

Price 7p

bottom of the Southern League.

However, just one game was lost in the first seven under Mr Allen's stewardship, with Joe Butler taking over the coveted number eleven shirt vacated by Rogers. But, in eighteen games that followed Christmas, only four resulted in wins for Swindon. Queens Park Rangers inflicted a 5-0 defeat at Loftus Road, which marked a sad and sudden return for the Town's new midfield signing, Mick McGovern. That result left the club in 21st position in the Second Division, but they managed to pull clear to finish three points above the relegation zone in 16th place.

The superstitious amongst the County Ground regulars blamed the black shorts that had now replaced the traditional white.

And success in the Cup was confined to a 2-0 Third Round F.A. Cup win over First Division Birmingham City. Swindon went out at West Bromwich Albion in the Fourth.



# ARKELL'S

ESTD **BREWERY** 1843





# Sporting Firsts . . . Continued

by Shaun Hodgetts

Ice hockey started in Huntingdonshire in 1813, originally known as 'bandy' at Buryfen. Seven years later cricket's first double century was recorded. Oxford lead Cambridge in their first boat race, from Hambledon Lock to Henley Bridge, clocking 14 minutes 30 seconds for the 2¼ mile route, on June 10th 1829.

In 1831 cross country running started at Shrewsbury School, much to the delight of students through the years!!

Lottery, ridden by Jem Mason, won the first Grand National, at Aintree on February 26th 1839. In the same year, the Henley Regatta began on June 14th. Within 12 months the Royal Shrewsbury School Hunt organised the first athletics meeting of modern times, while Sondre Nordheim performed the first ski jump, at Mogedal in Norway.

The first recorded football elevens in 1841 – the Wet-Bobs XI v the Dry-Bobs XI at Eton in November.

The first club was formed at Cambridge University soon afterwards by Edgar Montagu of Caius College. Handling the ball was made lawful at Rugby School in the same year and rugby football was first introduced. That sports inaugural club was Guy's Hospital RFC in London, set up in 1843.

In 1860 the first composition cricket ball was patented by Hamlet Nicholson of Rochdale.

The football match on February 12th 1861 between Sheffield and Hallam was the first 'inter-club' and the first to charge admission. The first British Open golf title was won in the same year by Tom Morris, at Prestwick.

Three years later the first squash courts were built at Harrow School.

The first National Athletics Championships were on March 23rd 1866.

Lawn Tennis was first played by J.B. Perara and Major T.H. Gem in Birmingham, a long way from Wimbledon! Later the same year that man Tom Morris (see earlier) shot the

first ever recorded 'hole-in-one' in the 1868 Open Golf championship on the 166 yard 8th hole at Prestwick. The first football tournament was won by Sheffield Wednesday – the Yorkshire F.A. Cromwell Cup in the same year.

Badminton originated at Badminton Hall in Gloucestershire in 1869. Polo was introduced to Great Britain at the same time at Aldershot, by 10th Hussars.

Scotland beat England at Edinburgh on March 27th 1871 in the first rugby international – little changes!!

A year later, in footballs first cup final, Wanderers won one-nil against the Royal Engineers at the Oval on March 16th.

In 1874, invented by J.H. Heathcote, the cloth-covered tennis ball, replacing plain rubber, was first used at Conington Castle in Huntingdonshire.

The earliest known football programme appeared on October 9th 1875 for the match between Queens Park and Wanderers at Hampden Park. Snooker started in the same year, devised by Sir Neville Chamberlain as a variation of Black Pool.

The first greyhound race, with an artificial hare was in 1876 – the Hendon Cup on October 7th. The first test cricket match was 5 months later, Australia v England in Melbourne.

In 1878 we had floodlit football thanks to four Siemens Arc lamps at Bramall Lane, Sheffield for the Reds v the Blues on October 14th. The rugby equivalent was at Broughton in Lancashire less than a week later when Swinton were the visitors four years later.

The first boxing manager, Billy Madden in charge of John L. Sullivan and the first ice hockey club to be formed in Great Britain at Bluntisham and Erith in Huntingdonshire. J.H. Forrest of Blackburn Rovers was the first professional footballer to play for England in 1884 while the professional game was legalised by the F.A. on July 20th 1885. A month later in the first



world heavyweight boxing championship fought with gloves saw John L. Sullivan beat Dominick McCaffery. International football caps were first approved by the F.A. Council on May 10th 1886.

League matches were first played on September 8th 1888.

Racing's first photo-finish was introduced in the same year by Ernest Marks at Plainfield Track, New Jersey.

In 1890, on New Years Day, goalnets devised by Liverpool engineer J.A. Brodie were first used, in the football match between Bolton Wanderers and Nottingham Forest. The first penalty-kick was taken a year later by Heath for Wolverhampton Wanderers against Accrington. We don't know if he scored!!

In 1892 the first one hundred pounds transfer fee was paid by Aston Villa for Willie Groves. Two years later Sunderland became the first football club to make an overseas tour, to the United States.

Those were a selection of the 'sporting firsts' until the turn of the century. Let's hope Swindon Town are promoted to Division One at the end of this season for the first time in their history, and then take their place in the top flight!!



# **LEMON & CO**

## **SOLICITORS**

***A SUBSTANTIAL PRACTICE ABLE TO  
PROVIDE ADVICE & HELP IN ALL  
ASPECTS OF COMMERCIAL & PRIVATE LIFE  
AND INCLUDING A FRIENDLY, THOROUGH  
AND PROFESSIONAL CONVEYANCING  
SERVICE***

**Richard Fry, Timothy Dixon, Deirdre Moss**  
**34 Regent Circus**  
**Swindon SN1 1PY**  
**Tel: SWINDON 527141**  
**FAX: SWINDON 614168**

**Martin Evans, Stephen Moss**  
**148 High Street**  
**Wotton Bassett SN4 7AB**  
**Tel: SWINDON 853665**  
**Fax: SWINDON 850324**

**Richard Challis, David Halfhead**  
**1 Little London Court**  
**Old Town, Swindon SN1 3HY**  
**Tel: SWINDON 527141**  
**Fax: SWINDON 511639**



# SWINDON T O W N

## *CLUBCALL*


# 0898 12 16 40

AVAILABLE FROM ANYWHERE IN THE U.K.  
7 DAYS A WEEK 52 WEEKS A YEAR

# SWINDON *CLUBCALL*

Calls cost 33p/minute cheap; 44p/minute other times.

BT Supercall, 1-9 Downham Road, London N1 5AA.

 SUPERCALL



## BARCLAYS LEAGUE 1990-91 LEADING SCORERS

### Division One

		BL	R	FA	O	T
Rush	Liverpool	8	5			13
Gascoigne	Tottenham	6	6			12
Platt	Aston Villa	7	3	2		12
Wegerle	QPR	11	1			12
Beardsley	Liverpool	11				11
Lincker	Tottenham	10	1			11
Chapman	Leeds Utd.	8	2			10
Elstrup	Luton Town	10				10
Saunders	Derby C.	7	3			10
Wright	Crystal P.	7	3			10

### Division Two

		BL	R	FA	O	T
Bull	Wolves	15		1		16
Slaven	Mid'boro	11	3	1		15
Payton	Hull City	14				14
Beckford	Port Vale	13				13
Hirst	Sheffield W.	11	2			13
Kelly	Leicester City	11	1			12
Sheringham	Millwall	10	2			12
Small	Brighton	10	1			11
Baird	Mid'boro	9		1		10
Quinn	Newcastle U.	10				10
Shearer	Swindon T.	9				9

### Division Three

		BL	R	FA	O	T
Angell	Southend U.	7	2	2	5	16
Page	Wigan A.	9	1	1	3	14
Philliskirk	Bolton W.	6	5	1		12
Sussex	Crewe Alex.	7	4	1		12
Blissett	Bournemouth	9	2			11
Castle	Leyton O.	6	3	2		11
Benjamin	Southend U.	7		3		10
Senior	Reading	10				10
Muir	Tranmere R.	7		2		9
Woods	Grimsby T.	8		1		9

### Division Four

		BL	R	FA	O	T
Rimmer	Walsall	12	4		1	17
Butler	Maidstone U.	8	2	2	1	13
Lovell	Gillingham	11	1		1	13
Allon	Hartlepool	6	2	3	1	12
Barnes	Northampton	9	1	2		12
Puckett	Aldershot	7	3	2		12
Muir	Doncaster R.	9	1	1		11
Norris	Halifax T.	9		1	1	11
Puckett	Aldershot	7	3	1		11
Tynan	Torquay U.	9	1	1		11
Pike	Cardiff City	9	1			10

BL - Barclays, R - Rumbelows League Cup, FA - FA Cup,  
O - European/Zenith Data Systems/Leyland DAF Cup.

Former Swindon Town players are in *italics*.

## MOVING THE GOALPOSTS IS NOT THE ANSWER

There has been a lot of talk lately of innovative ideas to improve the game.

Moving the goalposts both literally and figuratively to compensate for a perceived lack of goals is missing the point when more subtle adjustments to the laws and the structure of the game can have the desired effect - that is to encourage attacking play, accentuate the positive and so generate more goal scoring opportunities.

It is surely no coincidence that following the change this season in the off side law and the stricter punishment of the cynical foul that strikers have made full use of their new found opportunities and that goalscoring is up in every single division of the Barclays League and showing an overall increase of 4 per cent.

Likewise, the introduction in 1981-82 by The Football League of three points for a win continues to pay dividends in attacking football and increased spectator interest with consistently more goals being scored in every season since the change. The Barclays League Bulletin has highlighted these figures in the past but it is worth pointing out again, in a week when media attention was focussed on the subject, that in the nine years since three points replaced two points for a win, and the emphasis was shifted firmly to winning games, that over 2,700 more goals have been scored compared to the previous nine years. The figures are reproduced below:

### Two points for a win

1972/73	-	5,040
1973/74	-	4,937
1974/75	-	5,083
1975/76	-	5,218
1976/77	-	5,358
1977/78	-	5,266
1978/79	-	5,188
1979/80	-	5,204
1980/81	-	5,002

46,269

### Three points for a win

1981/82	-	5,277
1982/83	-	5,627
1983/84	-	5,574
1984/85	-	5,524
1985/86	-	5,678
1986/87	-	5,263
1987/88	-	5,327
1988/89	-	5,420
1989/90	-	5,352

49,042 (+ 2,746 goals)

(Average goals over 9 seasons with 2 points for a win 5,144, 3 points 5,449 [+ 5.9%]).

## THE BIPLOB TANDOORI Mach of the Match v Charlton Athletic



Jon Gittens

Jon's prize is an Indian Tandoori meal for two at The Biplob, Wood Street, Swindon.

Archways  
Bourne Way  
Hayes, Kent

Dear Swindon Town

Just a line to say thank you for the great day my daughter and I had yesterday when our team Charlton visited Swindon. You may recall my daughter represented Charlton in the pennant exchange, Swindon being represented by Marie Tombs whose father is a work colleague of mine.

Nothing was too much trouble for the officials and stewards and your club must be one of the friendliest in the League. It is the first time I have visited your ground and it would not have discredited the First Division - I can say this with some authority bearing in mind Charlton's recent past.

Thanks again, we are looking forward to seeing as many Swindon supporters as possible when we play you at our true home - the Valley.

Yours sincerely  
Roger Ford



**CALL THE RADIO LINE FOR THE  
LATEST SPORTS NEWS 24 HOURS A DAY  
ON 0898 333000** Calls charged at 38p/min peak/25p/min all other times



# **BETTER BUY BURMAH**

Burmah Petroleum Fuels Limited  
is proud to support Swindon  
Town Football Club and offers a  
warm welcome to all supporters  
at:

Swindon Autopoint  
Marlborough Road, Swindon

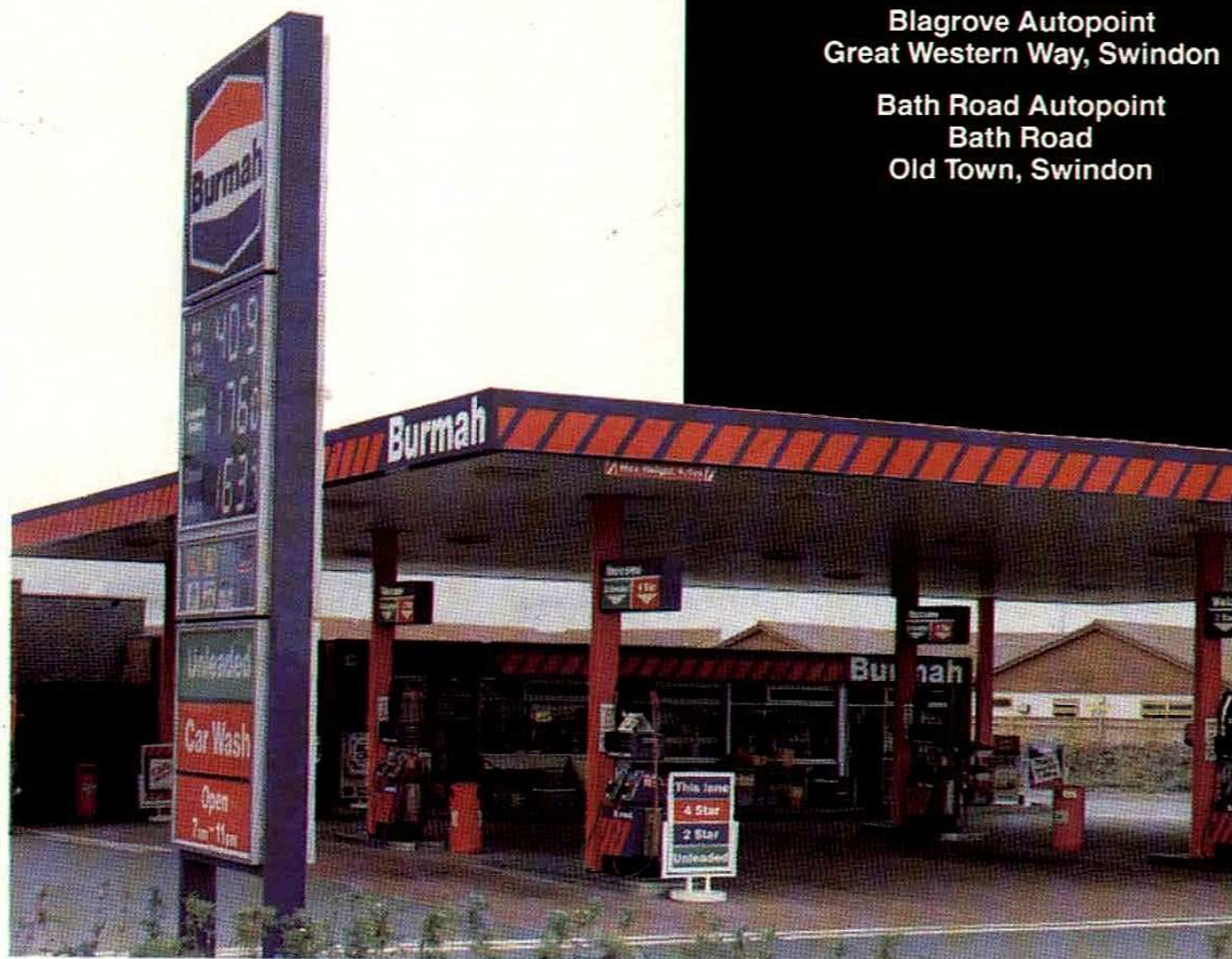
Newport Street Autopoint  
Newport Street  
Old Town, Swindon

Stratton Autopoint  
67 Bridgend Road  
Stratton St Margaret, Swindon

St. Margarets Garage  
Highworth Road  
Stratton St. Margaret, Swindon

Blagrove Autopoint  
Great Western Way, Swindon

Bath Road Autopoint  
Bath Road  
Old Town, Swindon



*Look out for the Burmah  
Footballs kicked into the  
crowd at every home match!*





## ELECTRONIC SCOREBOARD

We can now provide a message service for our fans, and pass on birthday greetings, announce engagements, weddings, births, etc. To be featured on the Scoreboard, once before the game and again at half-time, costs only £10.

You can select your match and also your message.

Just send your message and cheque for £10, payable to: Swindon Town FC, The Commercial Department, Swindon Town F.C., County Ground, Swindon Wilts. Or complete the form below:



I wish to advertise on your Electronic Scoreboard, and enclose cheque for £10 payable to Swindon Town F.C.

Name: .....

Address: .....

Tel No: .....

Date of Match: .....

v

Message as follows  
(not more than 10 words):

.....  
.....  
.....  
.....  
.....  
.....  
.....  
.....

## RUMBELOWS

Rumbelows would like to wish all supporters and players –

### A Happy New Year and Successful Season

We would also like to remind all supporters of our offer of a 5% discount off purchases on production of this programme with your membership cards. This offer even includes a 5% discount off sale products which are currently on display.

## Princess Margaret Hospital Visit

Last week Ross MacLaren and the lads visited the childrens ward of the P.M.H.

Gifts were distributed to the young patients who were happy to see some of their heroes in the flesh.

A Christmas tree was provided along with fruit and nuts and a good time was had by all.

Our thanks to Terry Wollen for donating the tree and fruit.

Thank you also to the staff at P.M.H. for making us all welcome.

Photos of the visit appear in today's programme.

May we take this opportunity to wish all patients and staff at P.M.H. a Very Happy and Healthy New Year.

## TODAY'S SPONSOR Our Match Sponsor Today is JOHN COYLE SERVICES

John Coyle Services are THE SPECIALIST in the installation, repair and maintenance of all types of fire doors, emergency fire exits and all types of door closing hardware as used on most commercial and industrial properties throughout the Swindon area.

John Coyle Services would like to wish all our customers a happy and prosperous New Year.



# McLEAN HOMES. BUILDING FOR EVERYONE'S FUTURE

McLean's superbly built homes are ideal for  
the 1990s.

Whether it's a 1-bed starter apartment, or a  
magnificent 4-bed executive home, the quality  
is outstanding.

And we'll keep building for everyone's future,  
right into the 21st century.

**McLean**  
CREATIVE BUILDERS

McLean Homes South West Limited, Omicron, Windmill Hill Business Centre,  
Swindon, Wilts. SN5 9YU. Tel: (0793) 874700.





# WALKER JACKSON

IVECO  
Ford  
TRUCK



Get a fresh start to motoring  
this season

ALL PRICES  
ARE  
INCLUSIVE  
OF VAT

## Check Ford First.

A 4.546 LITRE CAN 10/30, 20/50, OR 15/40 SF/CD  
MULTIGRADE FORD OIL PLUS FILTER  
TO FIT FORD KL, OHC, BL AND V  
ENGINES, ALSO SOME ALFA-ROMEO,  
FIAT, LADA, LANCIA, PEUGEOT,  
RELIANT, RENAULT, SAAB, TALBOT,  
TOYOTA AND VOLVO ENGINES

TECHNOLOGY TELLS...  
NEW SUPER COPPER  
CORE SPARK PLUGS  
FROM MOTORCRAFT

### £4.00

(SET OF 4 - INCLUDING VAT)



### £6.50

INC. VAT



## OPEN ALL DAY SATURDAY

ALL PRICES INCLUDE VAT



Walker Jackson & Co. Limited  
CAR PARTS  
Marlborough Road  
Tel: Swindon 695702



Walker Jackson & Co. Limited  
VAN AND TRUCK PARTS  
Coped Hall, Wootton Bassett  
Tel: Swindon 850225

PARTS CENTRE  
OPEN SIX DAYS A WEEK  
Monday to Friday  
8 am - 6 pm  
Saturday 8.30 am - 5 pm  
PARTS CENTRE  
OPEN SIX DAYS A WEEK  
Monday to Friday  
8.30 am - 6.30 pm  
Saturday 8.30 am - 3.30 pm



# THE ROBINS CORNER

## CHRISTMAS 1990

APRON PVC (White)	£ 5.00	P.&P. .50
ASHTRAY	£ 2.00	£ 1.00
BABYWEAR		
Bibs (Various Colours)	£ 1.00	.25
Sleep Suits (Various Colours)	£ 4.99	.45
BADGES		
Enamel (3/4")	£ 1.50	.25
Enamel (Round)	£ 1.60	.25
Enamel (Shield)	£ 1.75	.25
Embroidered	£ 1.20	.25
BATHROOM TIDIES Soap/Toothbrush	99 ea	.25
CAPS		
Flat	£ 3.00	.25
Jockey (Adults)	£ 3.50	.35
(Childrens)	£ 1.75	.35
Waterproof 'Football' (PVC)	£ 4.95	.35
CAR STICKERS (Various)	£ 1.00	.25
'Turtle'	£ 1.25	.25
'Swindon Town on Tour'	£ 2.95	.25
CERAMIC DOOR TILE		
'Supporters Room'	£ 1.50	.25
CLOCKS		
Travel	£ 3.99	.25
Wall (batteries not included)	£ 9.50	.75
COASTERS Leather (cork backed)	£ 1.20	.25
FOOTBALLS		
Trophy (Vinyl)	£ 7.50	£1.00
Various Match Balls	£12.00 to £86.00	£1.00
GLASSWARE		
One Pint Tankard	£ 2.50	Not suitable
Half Pint Tankard	£ 1.95	for posting
One Pint Nonic (Straight Glass)	£ 1.50	
Miniature Glass	.75	
GLOVES		
Mens or Youths	£ 2.50	.25
Boys	£ 1.75	.25
HATS		
'Beany'	£ 2.00	.25
Bob	£ 3.20	.35
Ski (Red or White)	£ 3.00	.25
JACKETS		
Body Warmers	£10.50	£1.00
Lightweight (Red or White)	£25.00	£1.00
Bomber (Grey only)	£22.50	£1.50
3/4 Length (Blue only)	£26.50	£1.50
JOGGING PANTS	£11.50	£1.00
KEY RINGS Various from £1.00 to	£ 2.50	.25
6-Ring Case	£ 2.50	.30
KIT BAG (Nylon) (Red)	£ 7.95	.60
MUGS (Various)	£ 2.00	.70

### WE TAKE

Access • Visa • Eurocard • Master Card  
 Cheques should be made payable to  
 Swindon Town Sports

OFFICE/SCHOOL		P.&P.
Bookmark (Leather)	£ 1.00	.25
Desk Tidy	£ 1.99	.35
Desk Tidy Gift Pack	£ 2.99	.45
Eraser	.35	.25
Pen .45 or	.60	.25
Pencil (Red or White)	.25	.25
Pencil Case (Red or White)	£ 1.00	.25
Pencil Sharpener	.35	.25
Ruler	.75	.25
PENNANTS		
Car	£ 1.50	.25
Large	£ 3.50	.25
PHOTOGRAPHS		
Individual Players	£ 1.00	.25
Team	£ 2.85	.25
'Wembley 1990' Framed	£30.00	N/A
REPLICA KIT		
Shirts from 22"/24"	£17.00	.50
up to 48"	£30.00	.50
Shorts from £5.35 to	£ 8.35	.50
Socks from £2.35 to	£ 3.15	.50
ROSETTES	£ 1.30	.25
SCARVES		
Acrylic	£ 3.50	.45
Acrylic 'Ossies Army'	£ 2.85	.35
Jacquard	£ 3.50	.45
Scarf with Pockets	£ 6.00	.45
Polo Neck Insert	£ 3.50	.35
Ladies Headsquare	£ 5.50	.25
SHIRTS		
Polo/Leisure	£11.50	.70
'Ossie Ardiles' Rugby Style	£18.50	£1.00
Quartered Rugby Style	£17.50	£1.00
Tri-Colour Sweatshirt	£17.50	£1.00
'Turtle' Sweatshirt	£15.00	£1.00
Childrens	£12.00	.60
Childrens Sweatshirt	£12.50	.60
SUIT COVER PVC (Maroon)	£ 6.50	.50
SWEATERS		
Acrylic V Neck	£14.50	£1.00
Courtelle V Neck (34" to 48")	£18.00	£1.00
Childrens (22" to 32")	£16.95	.60
T SHIRTS		
Play-Off Winners	£ 6.50	.50
UK Tour 1990/91	£ 6.50	.50
'Turtle'	£ 6.50	.50
TIES (Grey or Navy)	£ 5.95	.25
TOWELS	£ 5.50	.70
UMBRELLAS		
(Red/White, Yellow/Blue)	£17.50	£1.50
UNDERWEAR		
Boxer Shorts (Large only)	£ 5.99	.35
Ladies Briefs	£ 2.50	.25
WRISTLETS	£ 1.00	.25

★ WATCH OUT FOR OUR NEW COLOUR ★  
 ★ CALENDAR FOR 1991!! ★

### Shop Opening Hours:

	Mon.-Fri.	Sats.	Suns.
Non-Matchdays	09.30 - 16.30	09.30 - 16.30	Closed
Home Matchdays	09.30 - 19.30	09.00 - 14.45	10.00 - 14.45
Away Matchdays	09.30 - 12.00	Closed	Closed

'The Robins Corner', Swindon Town F.C., County Ground, Swindon, Wilts.

Tel: (0793) 430430 Extn. 209





Top: Chairman Gary Herbert says thank you to Mike Tanner, Director of McLean Homes South West Ltd., for sponsoring the Charlton game.

Bottom: John Laley of Swindon receiving his 'Goodmans' award for correctly answering the questions posed in the Portsmouth programme.





# AKERS GARAGE LTD.

**MAIN VAUXHALL CAR AND LIGHT COMMERCIAL DEALER**

VAUXHALL - VAUXHALL - VAUXHALL - VAUXHALL

CAR/VAN SALES NEW & USED  
Service Department M.O.T. Testing Station  
BODY & PAINT REPAIR SHOP  
Genuine Vauxhall Spares  
SELECTION QUALITY USED VEHICLES

VAUXHALL - VAUXHALL - VAUXHALL - VAUXHALL

## AKERS

**YOUR LOCAL VAUXHALL CAR AND LIGHT COMMERCIAL DEALER**

THE STREET, MOREDON, SWINDON SN2 3ES

Tel: (0793) 523457/8/9



### VAUXHALL

SERVICE - PARTS - SALES - SERVICE - PARTS - SALES - SERVICE - PARTS - SALES - SERVICE



## SILVER KNIGHT

THREE LEVELS OF SERVICE  
TO CATER FOR ALL NEEDS

- ★ VIP EXECUTIVE ★
- ★ LUXURY ★
- ★ GENERAL/CONTRACT ★

### UK and CONTINENTAL CHARTER for BUSINESS and PLEASURE

All Silver Knight Coaches are of a high standard  
You will receive the same efficiency whichever you choose

For our VIP/Executive service,  
our drivers wear tailormade suits to fit the occasion

Your comfort will be guaranteed with  
Reclining Seats - Curtains - Tables - Toilet/Washroom - Hot/Cold Drinks  
Fridge - Servery/Bar - Video - Telephone - Hostess/Guide

Silver Knight Coaches Ltd., Christian Malford, Chippenham, Wilts. SN14 5BH  
Telephone: (0249) 720360

### FOR COACH TRAVEL SUPREMACY



# Match & Ball Sponsors

Date	Opponents	Match Sponsor	Ball Sponsor
Tues. Sept. 28	Ipswich Town	Redman Sheet Metal	Hinders of Ermin Street. Swindon 824725
Sun. Sept. 2	Bristol City	The Plumb Center	Dave Smith. A Town Fanatic.
Sat. Sept. 15	Middlesbrough	Crosby Doors Ltd.	Peter Godwin. An ex-Swindonian now residing in Harrow
Tues. Sept. 18	Wolverhampton W.	M.S. Group, Swindon	Blunsdon House Hotel
Sun. Sept. 30	Millwall	Metalite Engineering	Mr. A. Raynor. Uni Mill Engineering
Tues. Oct. 9	Darlington	Blunsdon House Hotel	
Sat. Oct. 13	Bristol Rovers	Roy Allen Supplies	Hammond Construction, Highworth. Swindon 766112
Sat. Oct. 20	West Ham United	Arkells Brewery	Brize Norton Garages, Carterton
Sat. Nov. 3	Port Vale	Clarion Shoji (UK) Ltd.	Mr. J. Tremlin, Coped Hall Service Station
Tues. Nov. 6	Sheffield Wed.	Sir Seton Wills & Family	Edward & Trevor Howard of Fairford
Sat. Nov. 10	Portsmouth	Multi Agg Quarries	Travers Morgan & Partners, Consulting Engineers
Sat. Dec. 1	Blackburn Rovers	Mr. Clive Sharples	Data Call Systems Ltd. 78/86 Pennywell Road, Bristol BS5 0TR
Sat. Dec. 15	Charlton Athletic	McLean Homes Ltd.	Hayman & Partners, Swindon
Sat. Dec. 22	West Bromwich Albion	Swindon Calor Gas	Flow Forms Ltd. (Wiltshire)
Tues. Jan. 1	Plymouth Argyle	John Coyle Services	Cliff Jones. Wessex Conservatories
Sat. Jan. 19	Hull City	Colson Engineering	The Peter Allen Traditional Jazz Band
Sat. Feb. 9	Oxford United	Oxford and Swindon Co-Operative Society	Mr. Gerry Williams. Ring Cafe. Cavendish Square
Sat. Feb. 16	Sheffield Wed.	Heywood Insurance Melksham	Wilson Tool International Ltd.
Sat. Mar. 9	Notts. County	Power Plant Hire Ltd.	Calne Town F.C.
Tues. Mar. 12	Oldham Athletic	Action Plant Hire	Emery McLaven Orr
Sat. Mar. 23	Brighton & H.A.	Skurays Ltd. of Swindon	Mr. Paul Plowman
Sat. Mar. 30	Newcastle United	Hammond Construction Highworth	Mr. T. Harris, The Falcon Inn, Swindon
Sat. Apr. 6	Watford	F. Green & Sons of Lambourn	Mr. Piper & Friends, Swiss Chalet
Sat. Apr. 27	Leicester City	McLean Homes Ltd.	Baker Bros. Builders, Lambourne
Sat. May 4	Barnsley	Clarion Shoji (UK) Ltd.	Titcombe Garages, 24 Hour Breakdown Service. Swindon 641643

## On the road to Bristol City

Saturday January 12th 1991

Kick-Off 3.00 p.m.

### Route

Take M4 then M5 south to junction 18, also signposted 'Bristol Zoo'. Follow into Bristol, underneath Clifton Suspension Bridge to Ashton Gate.

### Parking information

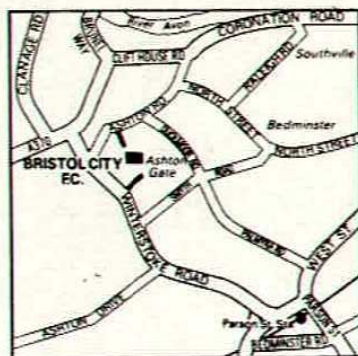
Car park for season ticket holders. Street parking.

### Nearest railway station

Bristol Temple Meads.

Tel: (0272) 294255.

### Plan of Ashton Gate



**GWR FM 97.2**

**THE INFORMATION STATION**





Nicky Hammond meets Robin Haydon and Frazer Digby with Samantha Ayres at Princess Margaret Hospital.

**GWR** FM 97.2

**FIRST FOR SPORT**





OUR TEAM ALSO  
COVERS BUSINESS  
EVERYWHERE.

\*\*\* YOU'RE  
BETTER OFF  
TALKING TO  
 BARCLAYS

*We know it's teamwork that counts, so come  
down to see our squad for the back-up your business needs.*



OVER 100 CARS TO  
CHOOSE FROM - LATEST  
MODELS AVAILABLE.  
SALOONS, HATCHBACKS,  
ESTATES, AUTOMATIC,  
SPORTS, PRESTIGE CARS

- RADIOS
- CHILDSEATS
- ROOF RACKS
- & TOW BARS

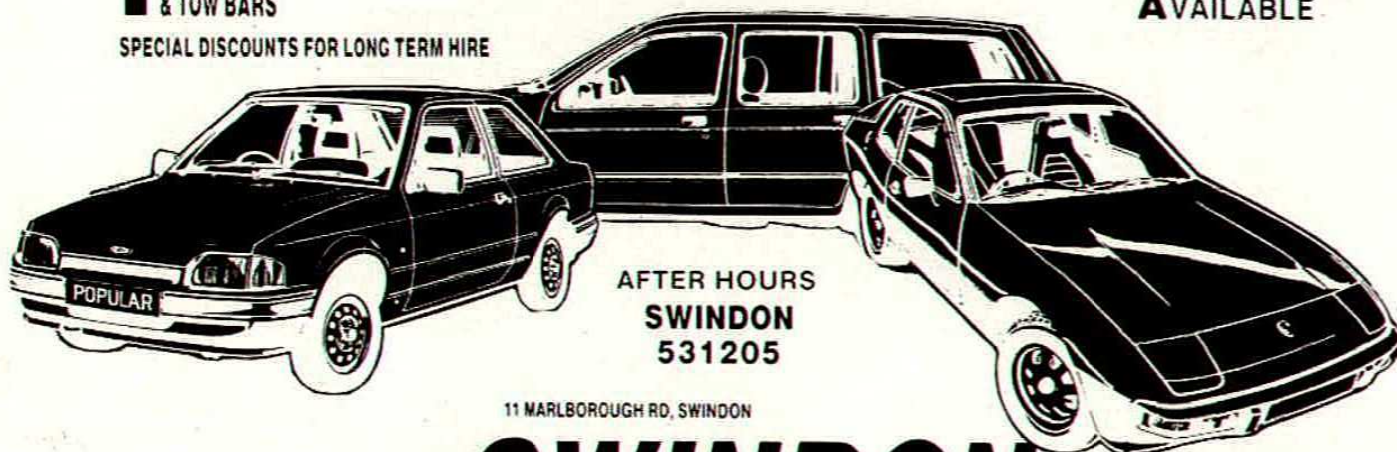
SPECIAL DISCOUNTS FOR LONG TERM HIRE

# DELUXE CAR HIRE

FULL AA RELAY  
COVER

NO MILEAGE  
CHARGE

DELIVERY &  
COLLECTION  
AVAILABLE



AFTER HOURS  
SWINDON  
531205

11 MARLBOROUGH RD, SWINDON

NO HIDDEN EXTRAS  
WE QUOTE ALL IN  
PRICES

OPEN 7 DAYS A WEEK

## SWINDON 644996



## BAMPTONS



STRATTON ROAD,  
SWINDON,  
WILTSHIRE.

TEL: (0793) 35547/8/9

## MOTOR VEHICLE ACCIDENT REPAIR SPECIALISTS

*Approved by Major Insurance Companies*



Motor  
Agents Association



# REFEREES WANTED



Throughout the country local football depends on the services of keen, dedicated people who make a vast contribution to the national game as referees, enabling players to more easily enjoy their matches.

## **CAN YOU HELP?**

Every year more clubs are registered with The Football Association. There are more and more matches to which referees must be appointed.

## **CAN YOU HELP?**

If you have played the game at any level you will know how important it is to have a qualified referee present.

## **CAN YOU HELP?**

If you are physically fit, with good eyesight and are at least fourteen years of age and willing to attend a local course of instruction, in preparation for a straight forward examination,

## **WILL YOU HELP?**

If you are interested in accepting the challenge of refereeing local football matches

## **PLEASE CONTACT:-**



**THE FOOTBALL ASSOCIATION  
16 LANCASTER GATE,  
LONDON W2 3LW.**

quoting referee recruitment or  
your local County Football Association.  
Don't forget that today's top referees all  
started at this level.

This is the first rung on the ladder.



## News and Views

### SWINDON TOWN TRAVEL CLUB NEWS

The next away match will be in the F.A. Cup to Leyton Orient on the 6th January 1991.

The official Travel Club will be running coaches and we ask Travel Club members to book as soon as possible.

Two official Travel Club coaches were scheduled to make the long trip to Newcastle on Boxing Day. Two hampers full of Christmas goodies were raffled on each coach.

The Travel Club has a rather special new member – Amanda Enstone was born at 3.13 a.m. on 1st December 1990 at 1.30 p.m., just ten hours later proud dad David arrived with photographs to enrol baby Amanda in Swindon Town Travel Club, all 6lb 4 oz of her.

Happy New Year to all of you, and keep travelling with the official Travel Club.



Once again we are sorry there was not a match for you today, but Plymouth do not make reciprocal visits, but for those of you who made the trips to Newcastle and Watford, we hope you enjoyed your outings.

We have another competition for you today. Answer the questions below correctly and you could win yourself a late Christmas present. Post your answers to Mrs. J. Moore, Commercial Department, S.T.F.C., The County Ground, Swindon, Wilts. by Monday 14th January 1991. A draw will take place on Tuesday 15th January and the first correct entry drawn will receive an autographed football.

Good luck everybody.

#### Questions

1. Who was top goalscorer during the 1989/90 season?
2. In which year did we win the League Cup and who scored?
3. Who managed the winning League Cup side?
4. Who made the most appearances for Swindon in the 1989/90 season (including all Cup matches)?
5. How many full International players are there in the squad?
6. What was the date of the Play-Off Final at Wembley last year?
7. Which is the odd one out – North Stand, Stratton Bank, Shrivensham Road, Town End?
8. Who is the longest serving player in the first team squad?

The next meeting of the Junior Robins will be on Monday 7th January 1991 at 5.40 p.m. in the Alamo.




# YOU SUPPLY THE TALENT MITRE SUPPLY THE REST !



MITRE ARE THE SOLE MANUFACTURER & SUPPLIER TO THE ENGLISH FOOTBALL LEAGUE  
OF THE EXCLUSIVE DELTA DESIGN OFFICIAL MATCH BALL.



# Kit Sponsors

<b>FRASER DIGBY</b> A. Mr and Mrs Fisher, Birdcombe Walk B. Mrs Chilcott, Ash Walk, Warminster C. The Brown Family, Carterton D. Alexander Independent Financial Advisors E. S.T.F.C. Skittles Team, Stonehouse	<b>NESTOR LORENZO</b> <b>Cleaning Enterprises, Wroughton</b> <b>Specialists in all types of cleaning</b> Complete kit	<b>COLIN CALDERWOOD</b> A. Mr and Mrs Peet, White Hart, Oare B. Mr Tim Barnes, Ashton Keynes C. R. & K. Owen, Friesian Close, Swindon D. Roland, Nigel, Sam Jones & Peggy Postma E.
<b>NICKY HAMMOND</b> <b>Modular Marquees</b> <b>(06667) 246</b> <b>and</b> <b>Mr Jonathan Powell</b> Complete kit	<b>MICKY HAZARD</b> <b>Marchants Contract Cleaning</b> <b>Britannia Lift Services (U.K.)</b> Complete kit	<b>SHAUN CLOSE</b> A. Compton Welding, Purton 770742 B. V.G. Newman, Lea, Malmesbury C. John Ward, New Farnley, Leeds D. Tudor Carpets, Seymour Rd., Swindon E. Jefferies D.I.Y., High St., Highworth
<b>DAVE BENNETT</b> A. Mr and Mrs Tucker of Seend B. Mr Piper and Friends, Swiss Chalet C. Mr and Mrs Fisher, Birdcome Walk D. Bryant School of Motoring: 823421 E. Colin Aldridge, Highworth		<b>PAUL BODIN</b> <b>Mr K. P. Emms</b> <b>Mary Hower Take Away</b> <b>Groundwell Road</b> <b>Swindon</b> Complete kit
 <b>TOM JONES</b> <i>"I bet he drinks Carling Black Label"</i> Complete kit 		<b>NICKY SUMMERBEE</b>  <b>Sir Seton Wills</b> Complete kit
<b>JON GITTENS</b>  <b>Wessex Conservatories</b> Complete kit		<b>DAVID KERSLAKE</b>  <b>Haine &amp; Smith Opticians</b> <b>Marlborough, Swindon, Highworth</b> Complete kit
<b>ROSS MACLAREN</b> A. John Tremlin, Coped Hall S. Station B. Terry Wollen, Wollens Off Licence C. Lynne Stevens, Warminster D. Rebecca Vockins, Highworth E.		<b>DUNCAN SHEARER</b>  <b>Bassett Bookmakers</b> Complete kit
<b>ALAN McLOUGHLIN</b> A. John Harris, Westcott Place P.O., Swindon B. Alexander Independent Financial Advisors C. Keith Chilcott, Warminster D. Sandra Coburn E.		<b>FITZROY SIMPSON</b>  <b>Clare Catering of Oxford</b> Complete kit
<b>KEVIN MORRIS</b> A. Geoff James of Banbury B. Mr Maurice Earle C. D. E.		<b>STEVE WHITE</b>  <b>Multisets</b> <b>For all Computer Stationery</b> <b>Tel: (0793) 729500</b> Complete kit
<b>ADRIAN VIVEASH</b> <b>Raynor and Sons</b> <b>Vehicle Dismantlers</b> <b>Broad Town, Swindon</b> <b>Tel: Swindon 863715</b> Complete kit		<b>PAUL HUNT</b> <b>TS TYPESETTING</b> Typesetters of the official S.T.F.C. matchday programme <b>Tel: (0793) 618505</b> Complete kit
<b>STEVE FOLEY</b> A. Mrs Chilcott, Warminster B. G. Mulcahy, Wills Club, Swindon C. R. and J. Warren of Lambourne D. Jason & Duncan Malcome, Bulford E.		<b>ANDY ROWLAND</b> A. R. K. Owen, Friesian Close, Swindon B. Chris Weavers, Haydon Ct., Swindon C. A. Pegler & H. Mahoney, Kempford D. E.
<b>TONY GALVIN</b>  <b>The Robins Out Of Town</b> Complete kit	<b>CHIC BATES</b>  <b>Julian Wilson</b> Complete kit	<b>JOHN TROLLOPE</b>  <b>Nationwide Anglia Building Society</b> Complete kit

Key: A = Shirt. B = Boots. C = Tracksuit  
D = Training Kit. E = Shorts/Socks.

**GWR FM 97.2**

**FOR SPORT, NEWS, INFORMATION AND ENTERTAINMENT 24 HOURS A DAY, CALL THE GWR RADIO LINE ON 0898 333000**

Calls charged at 38p/min peak/25p/min all other times



# THE UNBEATABLE TEAM DEACONS



PLUS

ROLEX

SALES  
& SERVICE



# DEACONS

(Established 1848)



11-13 WOOD STREET, SWINDON

Tel: 522072 and 527530

23 MARKET PLACE, TETBURY Tel: 52766



# Hulford

**Motors Ltd**

SELF DRIVE HIRE SPECIALISTS  
FOR OVER 30 YEARS

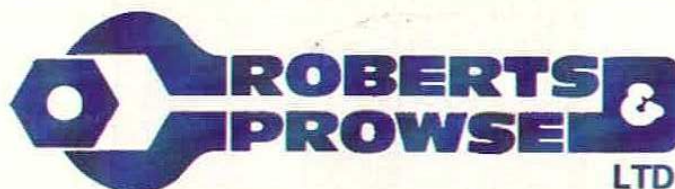
# CAR & VAN HIRE



SPECIAL LOW LONG WEEKEND RATES



SHRIVENHAM ROAD, SWINDON  
534934 & 524839



SPECIALISTS IN  
LTD.

*Process Pipework and Plant, Building Mechanical Services,  
Industrial Fabrication, Sheet Metalwork, Combustion Services, Thermal Insulation,  
Asbestos Removal, Engineering Merchants, Development Engineers*

THORNHILL, SOUTH MARSTON, SWINDON SN3 4TA.  
TELEPHONE (0793) 825505 FACSIMILE (0793) 822642



# CASTLE'S

Office and Bakery

4 and 5 MARKET STREET SWINDON

Telephone 522017

Specialists

Wedding Cakes, Birthday Cakes.

Try our Wholemeal Bread and

Wiltshire Lardies and

Delicious Dairy Cream Cakes

ELEGANT  
Reproduction Furniture

**Luxury . . .  
you can afford**



Qualities to suit all tastes . . .

Prices to suit all pockets . . .

Come and see for yourself at . . .

*Howell's*

Reproduction Furniture & French Polishing Specialists  
52, DEVIZES ROAD, OLD TOWN



Swindon. Tel: 535658





## MATCH TICKET ARRANGEMENTS FOR POSSIBLE REPLAY

**Leyton Orient v Swindon Town**  
**F.A. Cup 3rd Round**  
**Saturday, 5th January 1991. Kick-Off 3.00 p.m.**

Tickets for the above fixture are on sale now at the ticket office at £6.50 each.

Should this match be drawn, the replay will be on Tuesday, 8th January 1991, kick-off 7.45 p.m.

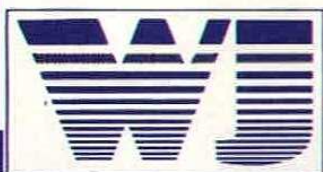
North Stand season ticket holders seats will be held for collection until 5.00 p.m. on Tuesday 8th January 1991. Tickets will only be released after the appropriate season ticket book has been presented, for the removal of voucher 'C', and the correct remittance has been paid.

Shrivenham Road and Stratton Bank season ticket holders should enter the ground via their usual turnstiles where their season ticket must be presented, for the removal of voucher 'C', together with admission money.

*N.B: For this fixture the Town End will be allocated to away supporters in accordance with F.A. Cup rules.*

# WALKER JACKSON

## Motoring... we're on the ball!



*We're with you all the way!*



A Member of the Normand Group of Companies

Car Sales  
Fleming Way  
Roundabout  
Tel: Swindon 20002

Car Service & Parts  
Marlborough Road  
Tel: Swindon 20002



Commercial Sales Service Parts  
Coped Hall, Wootton Bassett  
Tel: Swindon 853344



# Ten sound reasons for choosing a Wessex Conservatory.

Acknowledged experts: unbeatable quality. 1

Sturdy, durable: precision-engineered frame. 2

Superb choice of single or double glazed. 3

With toughened glass for extra safety. 4

Designed just the way you want it. 5



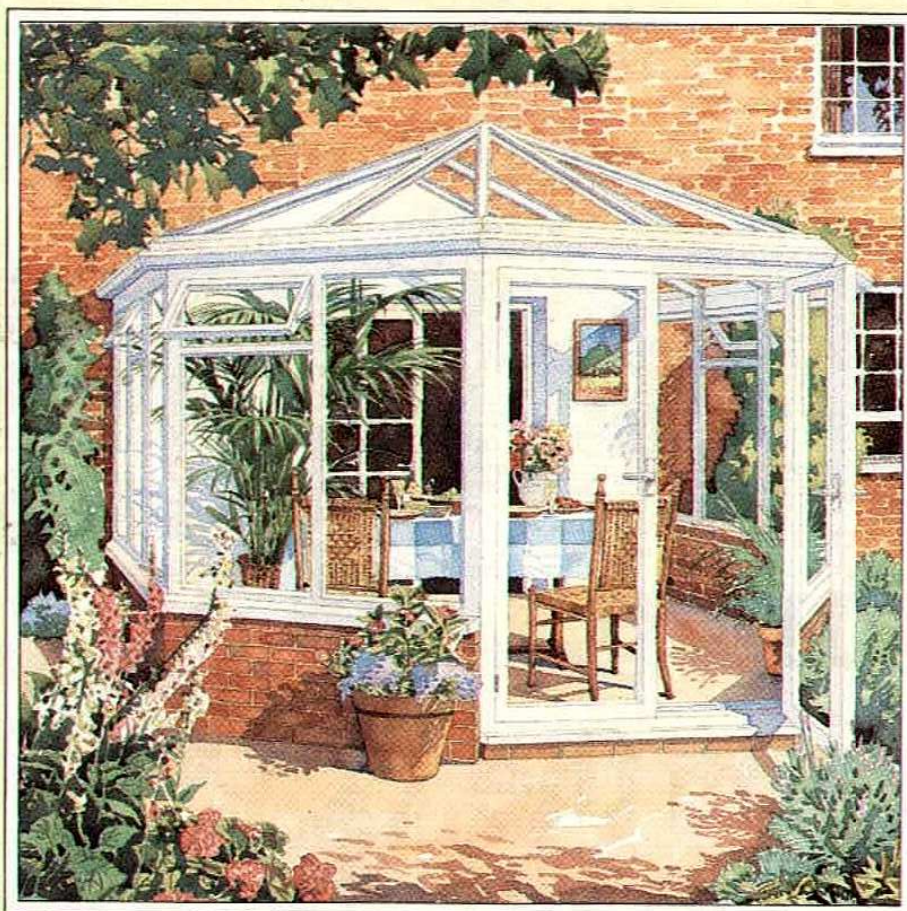
6 Clear-Shield easy-clean glass protection.

7 Planned and installed by trained personnel.

8 Super choice of blinds and other options.

9 Security locks and fittings standard.

10 Comprehensive 10 year Guarantee.



Available in  
Classic White  
or Havana Brown.

## WESSEX CONSERVATORIES

Founder member of the Conservatory Association.

For free 20 page colour brochure send this coupon to:

Wessex Aluminium Ltd., Hawksworth, Swindon,

Wilts. SN2 1DZ

Or PHONE (0793) 644633

Please send me your FREE 20 page colour brochure  
and details of my nearest Wessex dealer.

Name .....

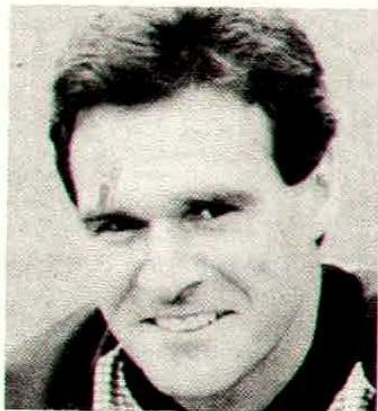
Address .....

Phone No ..... Ref. STFC





## Reserves & Youths



*Andy Rowland*

### **The Season So Far:**

By the time these notes are printed we will have completed half our fixtures for the season. Without obviously knowing the result of our game with Chelsea our results to date have been typical of reserve team football. The inconsistency factor is the main problem, never knowing on the day if the players involved are going to be

in the right frame of mind for the task in hand. Attitudes these days are not always right, interest in the game often wavers and for these reasons it's easy to see why results are so up and down.

After a reasonable start to the season where we were beaten only three times in twelve games, our results have taken a downward turn, at one time losing four games in a row. Yet to highlight my point perfectly about attitudes, after suffering an embarrassing 4-0 home defeat by Luton we then went away to Southampton and Watford and managed a 1-1 draw and a 6-0 away win. Hard to explain at times but if everybody played with a good interest and simply wanted to play the game then I'm sure we would see a better level of consistent performances.

### **South East Counties League & Cup Games**

The League season has been inconsistent both in performance and results. Much of this is down to the failure of the players to apply themselves properly, firstly to play the game with enthusiasm and then with the awareness and thought needed. Too often inferior opposition have outplayed us, because of a better application but on other occasions have more than matched other teams and certainly looked to have some good prospects.

Early exist from all four cup competitions, the League, Southern Junior Floodlit, Midland Youth and F.A. Youth cups, only gives us the League for the remainder of the season.

Several players have progressed to the Reserve side and equipped themselves well. Eliminating this inconsistent approach can only help them to perform better and enhance their chances of making the grade and gaining a professional contract.

### **Allied Counties League and Cup**

Playing nearly all under-17 players in an Under-18 League has seen us give size and strength away but as this is the purpose of this team, whether the players can cope with a better standard of football, and giving us the chance to assess their capabilities.

Performances have been on the whole quite good and as the individual performance is more important than the result, League positions are way down the list of priorities.

Most lads have been introduced to South East Counties football and hopefully further games in the new year will help us make our minds up regarding new trainees for next season.

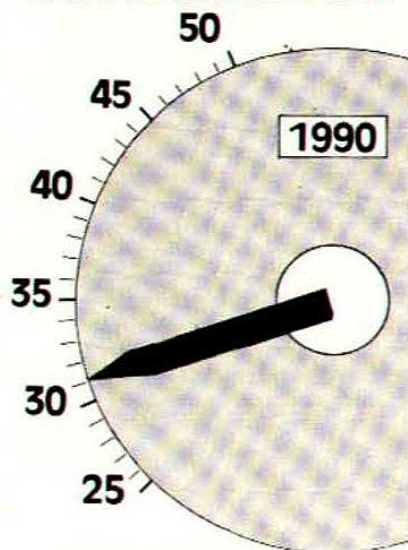


*5 of our young professionals who have come through from the South East Counties and Allied Counties teams. They are:  
Top left: Fitzroy Simpson  
Top middle: Adrian Viveash  
Top right: Paul Hunt  
Bottom left: Paul Trollope  
Bottom right: Nicky Summerbee*



## Statistics

### GOALOMETER



Swindon Town F.C. would like to thank the firms and individuals opposite for sponsoring every first team goal scored in competitive matches during season 1990/91.

#### SPONSORED GOALS

Abbey Road Garage, Cirencester  
M.S. Group, Swindon  
Clare Catering of Oxford  
Keith Lodge Industrial Roofing  
Metalite Engineering  
The Riverway Wine Company,  
Trowbridge  
Swindon Calor Gas Centre, Swindon  
Roy Allen Supplies, Swindon  
Brunel Scaffolding, Swindon  
Regal Windows, Swindon  
Skurveys, Drove Road, Swindon  
Thamesdown Cleaning Services,  
Swindon  
Multi Agg Quarries, Shellingford  
Les Smith Haulage, Swindon  
Moores Cars, Faringdon  
Carling Black Label  
Blunsdon House Hotel, Swindon  
Starlight Private Hire Cars, Swindon  
Western Daily Press  
Ashtons Auto's, Swindon  
Hammond Construction, Highworth  
High Close Soft Fruit, Hungerford  
Fisher Roofing, Link House,  
Highworth  
Biplob Tandoori Restaurants  
Swindon, Rodbourne, Highworth  
S. Coburn

### SWINDON TOWN FOOTBALL CLUB

#### MAIN OFFICE HOURS OF BUSINESS NEW YEAR 1991

Wednesday 2nd January  
Closed

Thursday 3rd January  
Open 9 am – 5.30 pm

Friday 4th January  
Open 9 am – 5.30 pm



## HELPING THE GAME



The Football Trust 1990 has been created to help the game at all levels and to assist clubs meet the requirements of Lord Justice Taylor's Final Report.

Safety and comfort for all spectators is the primary objective and substantial funds have been made available for the provision of seating at Football League grounds. At the same time the Trust's commitment to family and community initiatives will continue with the provision of more family enclosures, better toilet facilities, covered accommodation, artificial pitches for local use and the development of women's and junior football particularly through community programmes, plus a wide range of policing and crowd control measures.

Each year The Trust expects to receive £20 million from the reduction in Pool Betting Duty plus the £10 million continuing contribution from the Spotting-the-Ball competition organised by Littlewoods, Vernons and Zettlers. This money will be invested in projects which benefit football throughout the United Kingdom.



**BARCLAYS LEAGUE FIXTURES  
DIVISION TWO 1990/91**

BARCLAYS LEAGUE FIXTURES DIVISION TWO 1990/91					Digby	Kerslake	Bodin	Simpson	Calderwood	Gittens	Jones	Shearer	Close	MacLaren	Foley	Hockaday	McLoughlin	Summerbee	Buttigieg	Viveash	Hunt	White	Bennett	Tanner	Hazard	Hammond	Galvin	Lorenzo	Green	
Sat	Aug.	25	Charlton Athletic	2-1	7,542	1	2	3	4	5	6	7	8	9†	10	11	12†	14	-	-	-	-	-	-	-	-	-	-	-	-
Tues.	Aug.	28	Ipswich	1-0	10,817	1	2	3	4	5	6	7†	8	9	10	11	12	14†	-	-	-	-	-	-	-	-	-	-	-	-
Sun.	Sept.	2	Bristol City	0-1	12,254	1	2	3	4	5	6	7†	8	9*	10	11	12†	14*	-	-	-	-	-	-	-	-	-	-	-	-
Sat.	Sept.	8	Hull City	1-1	5,240	1	-	3	14†	5	6	7	8	9*	10	11†	2	4	12*	-	-	-	-	-	-	-	-	-	-	-
Sat.	Sept.	15	Middlesbrough	1-3	9,127	1	-	3	9	5	6	7	8	-	10	11	-	4	12*	2	14†	-	-	-	-	-	-	-	-	-
Tues.	Sept.	18	Wolverhampton W.	1-0	12,288	1	-	3	9	5†	6	7	8	-	10	11	-	4	14	2	-	12†	-	-	-	-	-	-	-	-
Sat.	Sept.	22	Oxford United	4-2	7,961	1	2	3	9	-	6	7	8	-	10	11	-	4*	-	14*	-	-	12†	5†	-	-	-	-	-	-
Tues.	Sept.	25	Darlington (LC R2)	0-3	4,037	1	2	3	9	-	6	7	8	-	10	11*	-	4	-	14*	-	-	12†	5†	-	-	-	-	-	-
Sun.	Sept.	30	Millwall	0-0	11,667	1	2	3	9*	-	6	7†	8	-	10	11*	-	4	-	-	-	-	12*	-	5	14†	-	-	-	-
Tues.	Oct.	2	Oldham Athletic	2-3	12,575	1	2	3	9	-	6	-	8	12*	10	-	-	4*	-	-	14	-	11	-	5	7	-	-	-	-
Sat.	Oct.	6	Brighton & H.A.	3-3	7,940	1	2	3	11	-	6	-	8	12	10	-	-	4	-	-	14	-	9	-	5	7	-	-	-	-
Tues.	Oct.	9	Darlington (LC R2)	4-0	7,066	-	2	3	11	-	6†	-	8	10	14†	-	4	-	5	12*	9	-	-	-	7	1	-	-	-	-
Sat.	Oct.	13	Bristol Rovers	0-2	11,494	-	2	3	8	-	-	14*	-	12†	10	11†	-	4	-	-	6*	-	9	-	5	7	1	-	-	-
Sat.	Oct.	20	West Ham United	0-1	13,658	1	2	3	8	-	6	7	-	12†	10	11	-	-	-	14	-	9	-	5	4†	-	-	-	-	-
Wed.	Oct.	24	Leicester City	2-2	9,592	1	2	3	4	-	6	7	8	-	10	11	-	-	-	12	-	9	-	5	-	-	14	-	-	-
Sat.	Oct.	27	Barnsley	1-5	7,690	1	2	3	11	-	6	7†	8	-	10	12†	-	4	-	-	14	-	9	-	5	-	-	-	-	-
Wed.	Oct.	31	Sheffield W. (LC R3)	0-0	13,900	1	2	3	4	-	6	7	8	-	10	11	-	12†	-	-	5	-	9†	-	-	-	14	-	-	-
Sat.	Nov.	3	Port Vale	1-2	7,714	1	2	3	11	-	6	7	8	-	10	12†	-	4†	-	-	5	14	9	-	-	-	-	-	-	-
Tues.	Nov.	6	Sheffield W. (LC R3)	0-1	9,043	1	2	3	12†	-	6	7	8	-	10	11	-	4†	-	-	5	-	9	-	-	-	-	14	-	-
Sat.	Nov.	10	Portsmouth	3-0	8,621	1	-	3	7*	-	-	2	8	12†	10	11	-	4	-	-	5	-	9	-	-	14†	-	-	6	-
Sat.	Nov.	17	Sheffield W. (FAC1)	2-1	22,715	1	-	3	7†	-	-	2	8	-	10	11	-	4	-	-	5	-	9	-	-	12†	-	-	6	14
Sat.	Nov.	24	Notts County	0-0	6,091	1	-	3	12*	-	-	2	8	-	10	11	-	4	-	-	5	-	9*	-	-	7	-	-	6	14
Sat.	Dec.	1	Blackburn Rovers	1-1	8,091	1	2	3	12†	-	6	7	8	-	10	11	-	4†	-	-	14	-	9	-	-	-	-	-	5	-
Sat.	Dec.	8	Ipswich T. (FAC2)	1-1	9,358	-	2	3	12†	-	6	7	8	-	10	11	-	4	-	-	5	-	9†	-	-	-	1	-	-	14
Wed.	Dec.	12	Chelsea (ZDC)	0-1	5,380	1	2	3	9	-	6	7	8	-	10	11	-	-	-	-	5	-	12	-	-	4	-	-	-	14
Sat.	Dec.	15	Charlton Athletic	1-1	7,364	1	2	3	9	-	6	7	8	-	10	11†	-	-	-	-	5	-	12†	-	-	4	-	-	-	14
Sat.	Dec.	22	West Bromwich A.																											
Wed.	Dec.	26	Newcastle United																											
Sat.	Dec.	29	Watford																											
Tues.	Jan.	1	Plymouth Argyle																											
Sat.	Jan.	5	Leyton Orient (FAC3)																											
Sat.	Jan.	12	Bristol City																											
Wed.	Jan.	16	League Cup R5																											
Sat.	Jan.	19	Hull City																											
Sat.	Jan.	26	F.A. Cup R4																											
Sat.	Feb.	2	Middlesbrough																											
Sat.	Feb.	9	Oxford United																											
Tues.	Feb.	12	Wolverhampton W.																											
Wed.	Feb.	13	League Cup S.F. L1																											
Sat.	Feb.	16	Sheffield W. (FAC5)																											
Sat.	Feb.	23	Portsmouth																											
Wed.	Feb.	27	League Cup S.F. L2																											
Sat.	Mar.	2	Blackburn Rovers																											
Sat.	Mar.	9	Notts. County																											
Tues.	Mar.	12	Oldham Athletic																											
Sat.	Mar.	16	Millwall																											
Wed.	Mar.	20	Bristol Rovers																											
Sat.	Mar.	23	Brighton & H.A.																											
Sat.	Mar.	30	Newcastle United																											
Mon.	Apr.	1	West Bromwich A.																											
Sat.	Apr.	6	Watford																											
Sat.	Apr.	13	Plym'th A (FACSF)																											
Sat.	Apr.	20	West Ham United																											
Sun.	Apr.	21	League Cup Final																											
Sat.	Apr.	27	Leicester City																											
Sat.	May	4	Barnsley																											
Sat.	May	11	Port Vale																											
Sat.	May	18	F.A. Cup Final																											

**PLEASE NOTE!**

**BARCLAYS LEAGUE DIVISION TWO**

**BRISTOL CITY v SWINDON TOWN**

**SATURDAY JANUARY 12th 1991 at ASHTON GATE**

**KICK-OFF NOW 3.00 p.m.**

**BY ORDER OF THE AVON POLICE**

Key: Home matches in bold      ● Goalscorer      † and \* Substitutions

Key: Home matches in bold • Goalscorer † and \* Substitutions

**PLEASE NOTE!**  
**BARCLAYS LEAGUE DIVISION TWO**  
**BRISTOL CITY v SWINDON TOWN**  
**SATURDAY JANUARY 12th 1991 at ASHTON GATE**  
**KICK-OFF NOW 3.00 p.m.**  
**BY ORDER OF THE AVON POLICE**



**WARNING TV  
SURVEILLANCE**  
*This ground is equipped with*  
**CLOSED CIRCUIT  
TELEVISION**

Installed with the help of a grant from the Football Trust. It is there to increase crowd safety and to help the police. Recording facilities enable film and photographs to be taken of disorder, which may subsequently be used in a court of law. The Football Trust is funded entirely by the pools companies Littlewoods, Vernons and Zetters from their Spotting-the-Ball competition.

**SPALL SPORTSWEAR  
LIMITED**

**Official Suppliers to Swindon Town  
F.C. and Many Other Leading League  
Clubs**

**DO CALL AND SEE DOUG WOODMAN AND  
VIEW THE LARGE RANGE OF FOOTBALL  
AND OTHER SPORTS GOODS AVAILABLE  
FROM THE OFFICIAL CLUB SHOP.  
OPEN 9.00 to 12.00 2.00 to 5.00 DAILY**



# SWINDON TOWN

# PLYMOUTH ARGYLE



FRASER DIGBY



DAVID KERSLAKE



PAUL BODIN



MICKY HAZARD



ADRIAN VIVEASH



JON GITTENS



TOM JONES



DUNCAN SHEARER



STEVE WHITE



ROSS MacLAREN



STEVE FOLEY



12. FITZROY SIMPSON  
14. RICHARD GREEN



Referee: R. F. Nixon  
Reserve Official: G. Webb



RHYS WILMOT



KENNY BROWN



STEVE MORGAN



BRIAN McALLISTER



ADRIAN BURROWS



DANIS SALMAN



MARTIN BARLOW



MARK FIORE



ROBBIE TURNER



PAUL ADCOCK



ADAM KING



12. OWEN PICKARD  
14. MARK EDWORTHY



Linesman Red Trim: N. H. Brown  
Linesman Yellow Trim: R. W. King

**NEXT HOME MATCH: Swindon Town v Hull City**  
Saturday January 19th 1991. Kick-Off 3.00 p.m.

**TODAY'S  
MATCH SPONSOR:**

**John Coyle  
Services**

**TODAY'S BALL SPONSOR:**  
Cliff Jones, Wessex Conservatories



← Dean  
Aldred



Craig  
Aldred →

**IMPORTANT SAFETY NOTICE**  
**IMPORTANT SAFETY ANNOUNCEMENTS BY THE CLUB MANAGEMENT OVER**  
**THE PUBLIC ADDRESS SYSTEM WILL BE PRECEDED BY A LOUD SIGNAL TO**  
**CATCH THE ATTENTION OF SPECTATORS.**